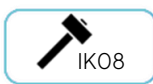
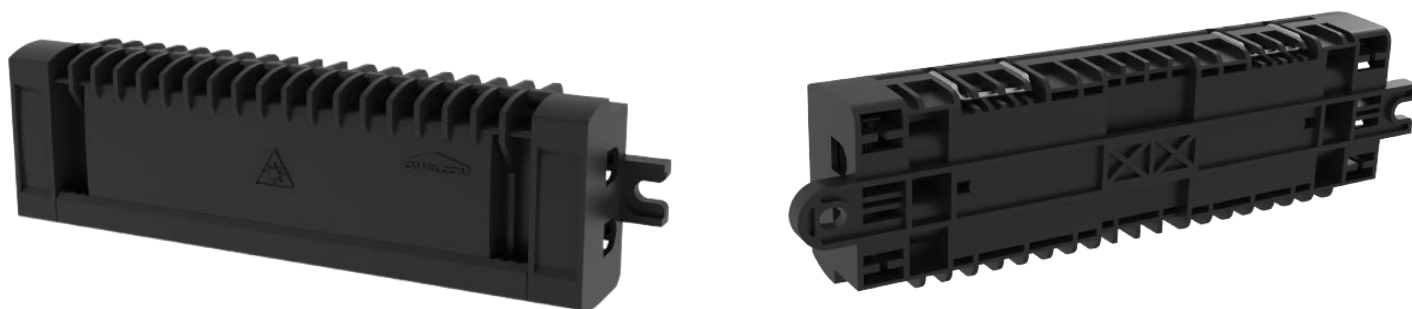


RFDC-Nano

Splice Enclosure



Renderings for Schematic Purposes Only

Part Numbers:

30-10081.00J - RFDC-Nano Splice Case
 30-10082.00J - RFDC-Nano with SC/APC

Description:

Introducing the RFDC-Nano: Your Ultimate FTTH Network Solution!

The RFDC-Nano is a game changer designed for installation in manholes or on poles. It's your go to solution for connecting or maintaining FTTH networks.

This versatile box handles external to internal cable transitions, property demarcation, cable repairs, extensions, and network burial with ease.

With the capacity to manage two cables on each side and splice four optical fibers, the RFDC-Nano ensures seamless and reliable connectivity, making it an indispensable tool for modern fiber optical networks.

Get ready to experience a new level of efficiency and performance with this robust and practical solution.

Product Features:

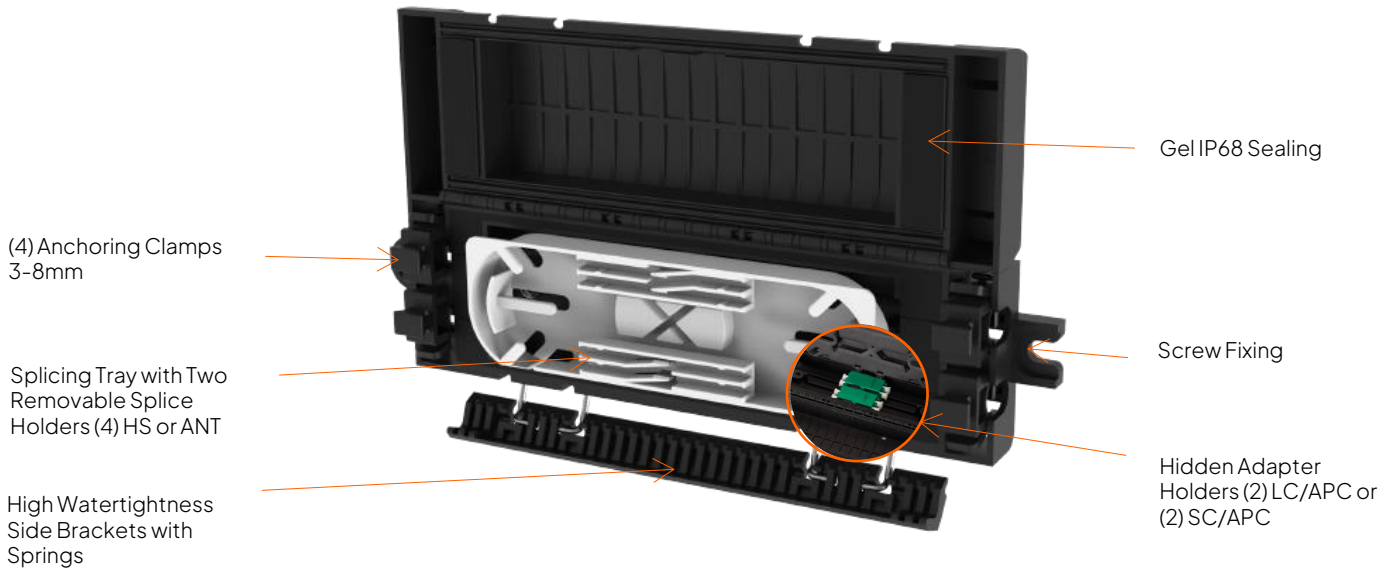
- Ultra-compact and discreet design
- IP68 certifies for underground and aerial use
- UV-resistant for enhanced durability
- Perfect sealing with high-quality silicone gel
- Easy installation: no accessories required for anchoring cables

CONTACT & INFORMATION:

Tel: (920) 328-1020 Email: sales@raddnetwork.com Website: RaDDNetwork.com



Design Details:



Dimensions: 7.24"x1.91"x1.16"

Details:

Features	Performances	Standard references
Dimensions	184 x 48.5 x 29.5 mm	
Material	PC compound	
IP - IK	IP68 IK08	EN 60529 EN 62262
Color	Black UV resistant	ISO 11664-4 ISO 4892-2 / -3
Fixing	By screw on wall By metal strap on pole	
Anchoring	4 anchoring clamps	
Cable input	4 entry ports diameter 3 to 8 mm (Round & Flat Cable Types) Singlemode G.657.A2	IEC 60793-2-50
Retention	10D with clips 15D with clips + cable ties	EN 61300-2-4
Capacity	4 removable heat-shrink splice holders from 30 mm to 45 mm diameters 2.3 to 2.6 mm after shrinking or 4 crimp-splice protectors (ANT)	
Connections	2 LC/APC DX or 2 SC/APC adapters	

Packing Details :

Part number	Description	ID	Parts per box	Parts per pallet
CO400	AMPHIBOX NANO IP68 UNLOADED	T2	Inner box 1:10 Master box 2: 240	2160
CO401	AMPHIBOX NANO IP68 2 SCAPC	T2	Inner box 1:10 Master box 2: 240	2160
CO402	AMPHIBOX NANO IP68 2LCAPC DX	T2	Inner box 1:10 Master box 2: 240	2160